

CASH REGISTER STAND ASSEMBLY INSTRUCTIONS



2960 Amwiler Rd.
Atlanta, Ga 30360
dawsonjones.com
(800) 418-1954
(770) 458-7234

TOOLS NEEDED

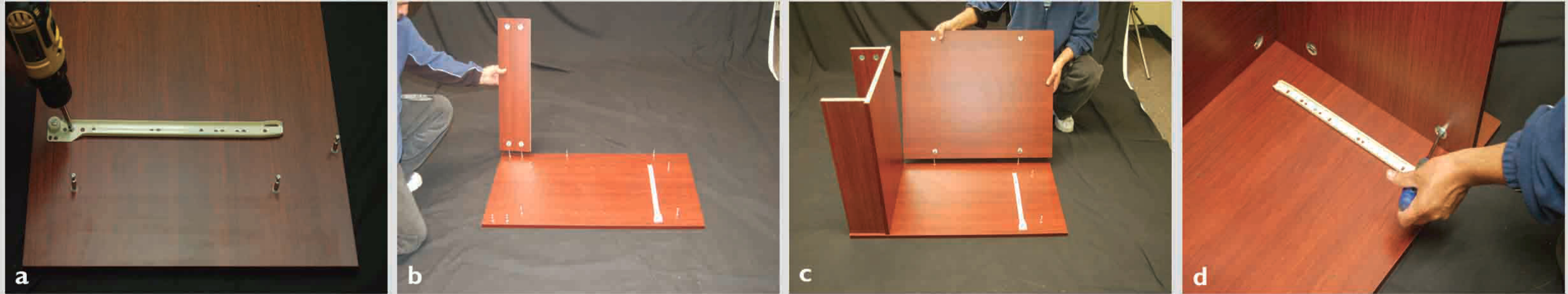


1.

TOE KICK, BOTTOM PANEL, FRONT PANEL AND TOP PANEL ASSEMBLE

- LEFT SIDE PANEL (x1)
- TOE KICK (x2)
- BOTTOM PANEL (x1)
- FRONT PANEL (x1)
- COUNTER RIGHT SIDE SLIDER (x1)
- TOP PANEL (x1)
- #10 CAM LOCK (x10)
- BOLT (x10)
- #6x12 PHILLIPS SCREW (x1)

1. Attach counter slider to left side panel using #6x12 phillips screws.
2. Connect toe kick to left side panel using bolts.
3. Connect bottom panel to left side panel using bolts.
4. Connect front panel to left side panel using bolts.
5. Connect top panel to left side panel using bolts.
6. Insert and tighten #10 cam locks.

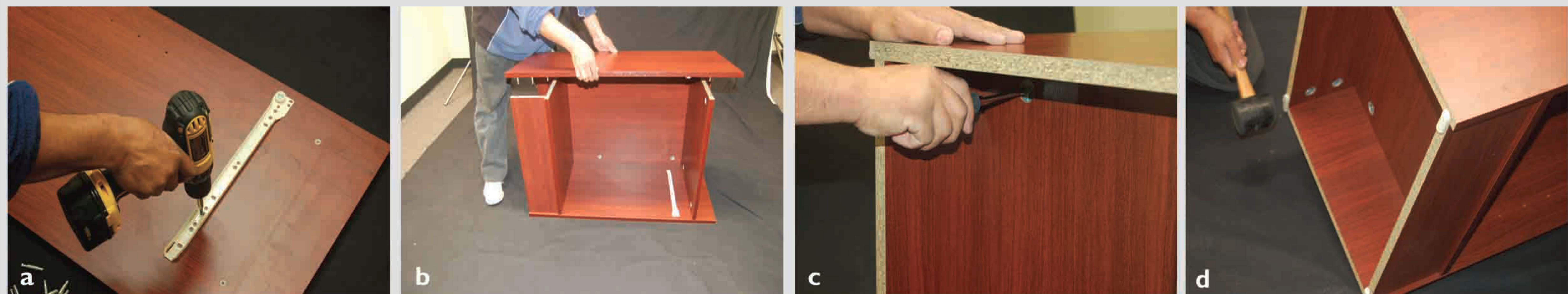


2.

RIGHT SIDE PANEL ASSEMBLE

- RIGHT SIDE PANEL (x1)
- COUNTER LEFT SIDE SLIDER (x1)
- #10 CAM LOCK (x10)
- BOLT (x10)
- #6x12 PHILLIPS SCREW (x2)

1. Attach counter slider on right side panel using #6x12 phillips screws.
2. Connect right side panel to counter using bolts.
3. Insert and tighten #10 cam locks.
4. Attach glides on the bottom.



3.

DRAWER ASSEMBLE

DRAWER FRONT (x1)
DRAWER LEFT SIDE PANEL (x1)
DRAWER RIGHT SIDE PANEL (x1)
DRAWER BACK PANEL (x1)
DRAWER BOTTOM PANEL (x1)
DRAWER SLIDER (x1 PAIR)
#6x12 PHILLIPS SCREW (x4)
#10 CAM LOCK (x2)
BOLT (x2)
DOWEL PIN (x6)

1. Connect drawer side panels to drawer back panel using dowel pins.
2. Slide drawer bottom into place.
3. Connect drawer front panel to drawer side panels using bolts and dowel pins.
4. Insert and tighten #10 cam locks.
5. Attach drawer sliders with drawer using #6x12 phillips screws.



4.

INSTALL DRAWER & SHELF

WOOD SHELF (x1)
SHELF SUPPORT PIN (x4)

1. Insert shelf support pins in place.
2. Slide drawer and shelf into place.

